



# VILLAGE ESTATES

• EST.1993 •



93 Main Road, Sidcup, Kent DA14 6ND

Tel: 0208 302 1002

[www.village-estates.com](http://www.village-estates.com)

Email: [sidcup@village-estates.com](mailto:sidcup@village-estates.com)



**GARAGE WITH REAR ACCESS**

**OFF ROAD PARKING**

**QUIET UNINTERRUPTED ROAD**

**WILLERSLEY PARK**

**DAYS LANE PRIMARY SCHOOL**

**EXTENDED - SPACIOUS  
CONSERVATORY**



**30 Ashcroft Crescent**  
Sidcup, DA15 8NT

**£409,995**



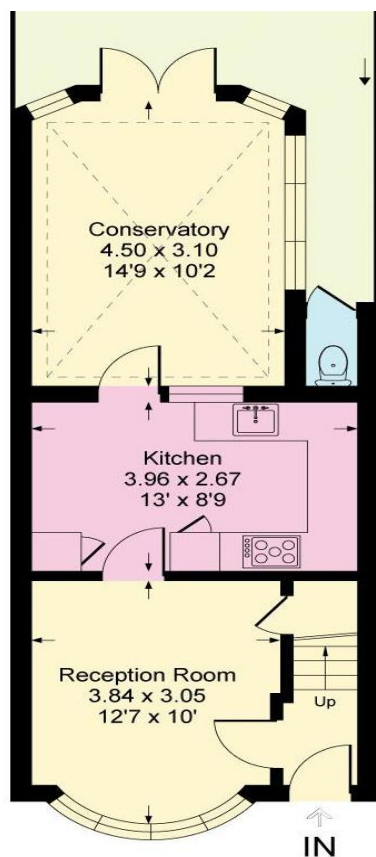
A 1930s bay fronted middle terraced house located in a pleasant tree lined road, rarely do properties become available in this road. Just a short walk to both Blackfen High Street and The Oval parade offering an array of amenities. Within equal distance to a number of Primary Schools, in particular Days Lane and Our Lady of The Rosary (Catholic).

**EPC RATING:** C

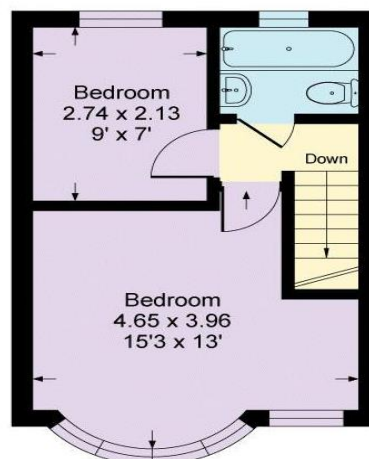
**TENURE:** Freehold

**COUNCIL TAX BAND:** C

**LEASE TERM:** Not Applicable



**Ground Floor**



**First Floor**

#### CONSUMER PROTECTION FROM UNFAIR TRADING REGULATIONS 2008

Please note that any services, heating system or appliances have not been tested, and no warranty can be given or implied as to their working order. You are advised to obtain verification from your solicitor or surveyor. References to the tenure of a property are based on information supplied by the seller. We have not had sight of the title documents and a buyer is advised to obtain verification from their solicitor. Items shown in photographs are not included unless specifically mentioned within the sales particulars, but may be available by separate negotiation. Whilst every attempt has been made to ensure the accuracy of the floor plan contained here, measurements of doors, windows, rooms and any other items are approximate and no responsibility is taken for any error, omission, or mis-statement. We advise you to book an appointment to view before embarking on any journey to see a property, and check its availability. The accuracy of these details are not guaranteed and they do not form part of the contract.